

Remax - Vantagem.

R. Alexandre Herculano 50 - Lisboa

E-MAIL vantagemcentral@remax.pt



DETALHE DO IMÓVEL

Morada individual T6 Bombarral



REFERÊNCIA: M-27532

LOCALIZAÇÃO

Distrito: Leiria

Concelho: Bombarral

Freguesia: Carvalhal

Localidade: Informação não disponível

Finalidade: Venda

Estado: Usado

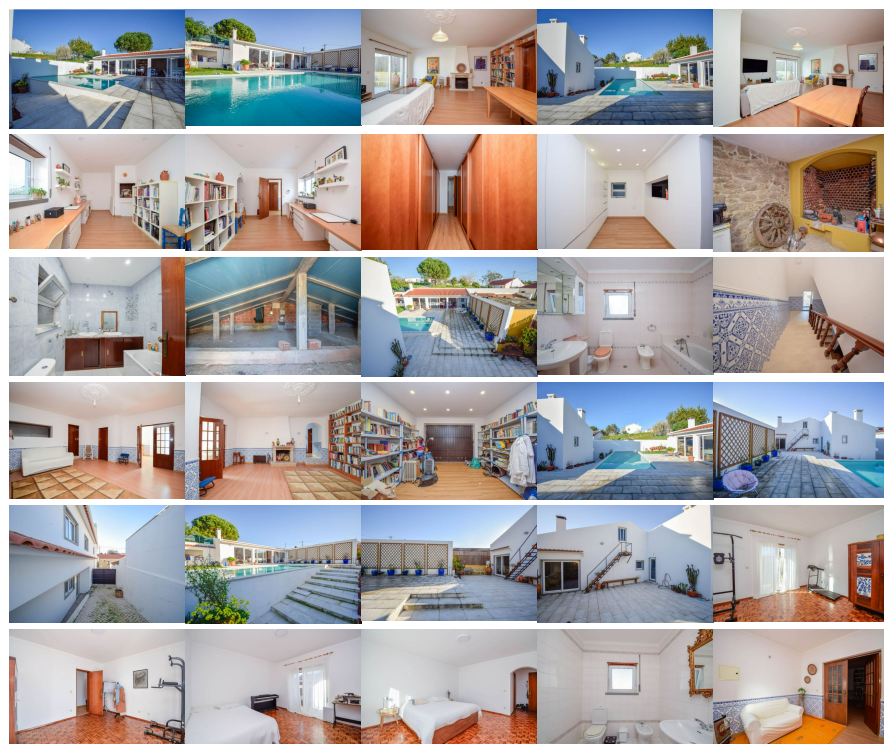
Área útil: 222.00 m²

Área terreno: m²

Ano de Construção: 1997

Preço: 399.000 €

MORADIA T6 CARVALHAL



CONTACTO DIRECTO HAVA RACHID +3_5_1_9_2_4_7_0_1_0_0_1 (custo de chamada móvel nacional) hrachid@remax.pt T6 VILLA Elegant two-story residence set in a lush landscape with gardens, a garage, and a pool. Located in the historic village of Carvalhal, it offers easy access to the A8 and A1 highways. The property features energy-efficient upgrades, including solar panels. The ground floor includes a bathroom, wine cellar, cozy living room with fireplace, kitchen with wood oven, two bedrooms, and a garage for one vehicle. Upstairs, you'll find a fully equipped kitchen, four bedrooms (one en-suite), a bathroom, and a living room with terrace access. The terrace includes a pool, barbecue area, and bathroom. Solar panels and photovoltaic systems ensure modern sustainability.

Informações e visitas, favor contactar através
ou web: <https://imoveisbanca.com>